



S727

ADVANCED HEAT EXCHANGERS

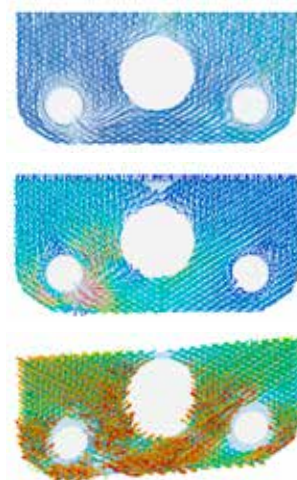
- The new Onda brazed plate S727 is the larger plate in the BHE portfolio and it has been developed to respond to Air Conditioning and Process Cooling applications with low pressure refrigerants as R1234ze, R515B, R513A and R134a.
- The design of the plate corrugation pattern has been optimized thanks to a CFD analysis supported by thermal laboratory test
- New patented distribution system which allows to achieve stable performance with large plate package

BENEFITS

- Cooling capacity up to 700 kW - evaporator
- Compact alternative to S&T evaporator: -30% dm³

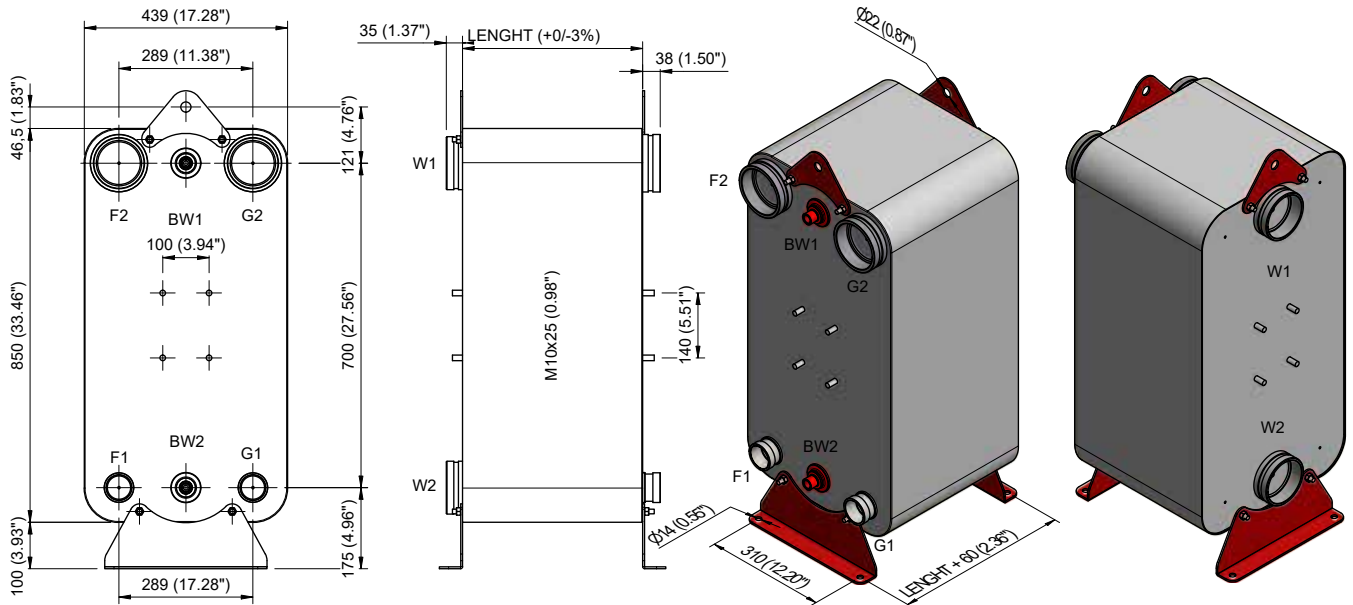
CONFIGURATION

- Capacity range 300 - 700 kW
- Dual refrigerant circuits
- PS 20 barg



CFD ANALYSIS

BRAZED PLATE



Optional: stud bolts and mounting feet

- | | | | |
|-----------|------------------------|-----------|-----------------------|
| F1 INLET | Refrigerant Circuit 1 | F2 OUTLET | Refrigerant Circuit 1 |
| G1 INLET | Refrigerant Circuit 2 | G2 OUTLET | Refrigerant Circuit 2 |
| W1 INLET | Secondary Fluid | W2 OUTLET | Secondary Fluid |
| BW1 - BW2 | Connections for Sensor | | |

SPECIFICATIONS	S727
PS (bar)	16
TEMPERATURE RANGE (°C)	-100°C to +120°C
MAXIMUM CONNECTIONS AVAILABLE (mm)	125
MAXIMUM FLOW RATE (m3/h)	200
VOLUME / CHANNEL (liters)	0,55
DIMENSIONS (mm)	440 x 850
LENGHT CALCULATION (mm)	$N \times 2,40 + 12$
WEIGHT CALCULATION (kg)	$N \times 1,13 + 60$

CONNECTIONS TYPE					
Soldering	Threaded M	Threaded F	Grooved	Rotalock	Flanges
S54	C60	F22	V80	R44	DN65
>	>	>	V90	R58	DN80
IS108	C90	F60	V100		DN100
					DN125
Standard Connections					
F1-G1 S42-A F2-G2 S100 W1-W2 DN100 BW1-BW2 F22					

N Number of plates

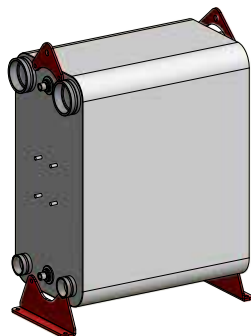
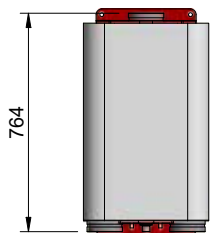
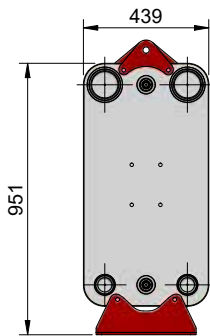
LETTER TO IDENTIFY CONNECTIONS TYPE

- S** Soldering Connections
- C** Conical Male Gas Threaded Connections
- G** Cylindric Male Gas Threaded Connections
- F** Female Gas Threaded Connections
- V - BV** Grooved System for Standard Flexible Coupling
- R** Rotalock Connections Male

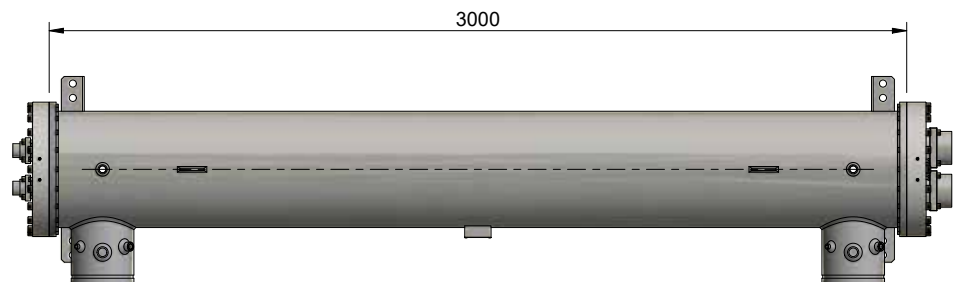
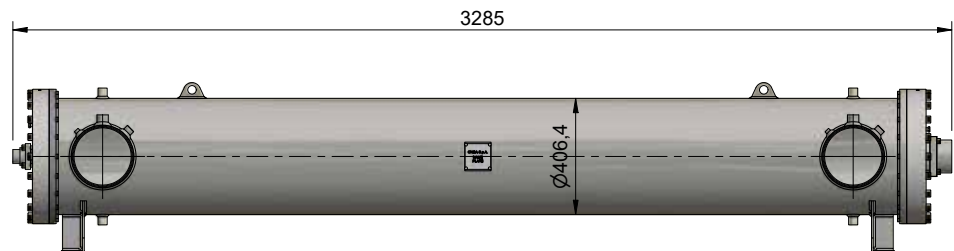
EXCHANGE PLATE MATERIAL Stainless Steel 316L

BRAZING MATERIAL Copper (Cu)

Difference between S727D and standard straight tube evaporator :
Capacity 700 kW, $T_{ev}=3.5^{\circ}\text{C}$, refrigerant R513A.



S727D : 420 Kg



Straight tube evaporator : 760 Kg

ONDA s.p.a.

onda@onda-it.com - www.onda-it.com

Onda France S.A.R.L.
320, Avenue Berthelot
69008 Lyon France
t. +33 472784606
m. +33 608341000
www.onda-fr.com
onda@onda-fr.com

Onda USA L.L.C.
600 London Rd
Delaware, OH 43015
t. +1 614 321 3342
www.onda-us.com
onda@onda-us.com

PLANT 1 Headquarters

Via Dante Alighieri, 27B
36065 Mussolente (VI)
Italy
t. +39 0424 87633

Onda RU
Mayakovskogo Street, 18a, Khimki,
Moscow Region, Russia 141402
t. +7 495 971 88 53
m. +7 916 676 16 54
www.onda-it.com
info@onda-ru.com

PLANT 2

Via L. Baden Powell, 11
36045 Lonigo (VI)
Italy
t. +39 0444 720720

Onda Nordic OY
Lentolantie 22
36220 Kangasala Tampere, Finland
t. +35 8331437300
m. +35 8409012999
www.wttgroup.fi
pasi.makinen@wttgroup.fi

PLANT 3

Via Vittoria, 158A
36065 Mussolente (VI)
Italy
t. +39 0424 87506

PLANT 4

Onda USA L.L.C.
600 London Rd
Delaware, OH 43015
t. +1 614 321 3342

Onda Shanghai Heat Exchanger Co., Ltd.
瓦蒾啞 (上海) 热交换有限公司
Shanghai, Changning District,
Anhua Road 492, Building 1 Tower A, Room 126
上海市长宁区安化路492号1幢 (A座) 126室A092
t. +86 021 6056 4838 (ext.1000)
m. +33 6 08 34 10 00