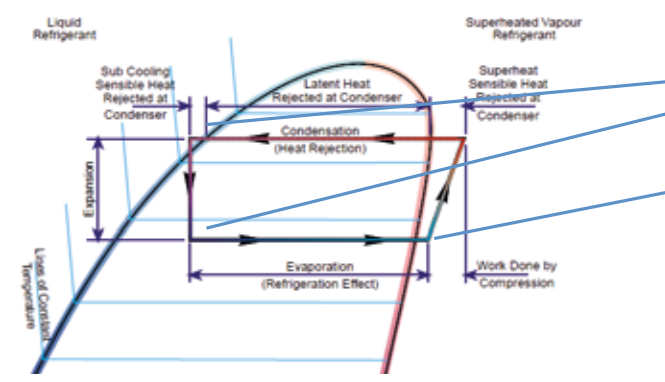
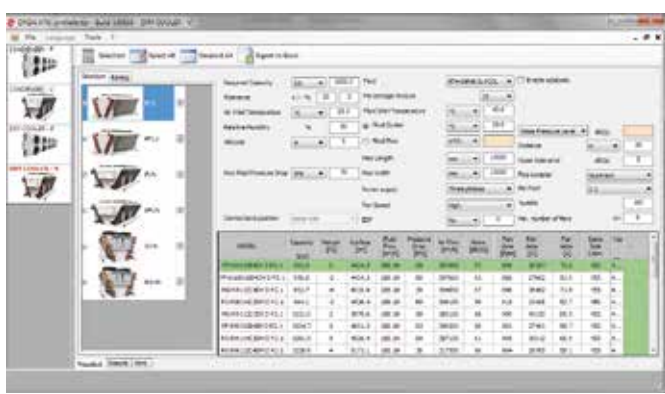


TUBE PASSIVATION

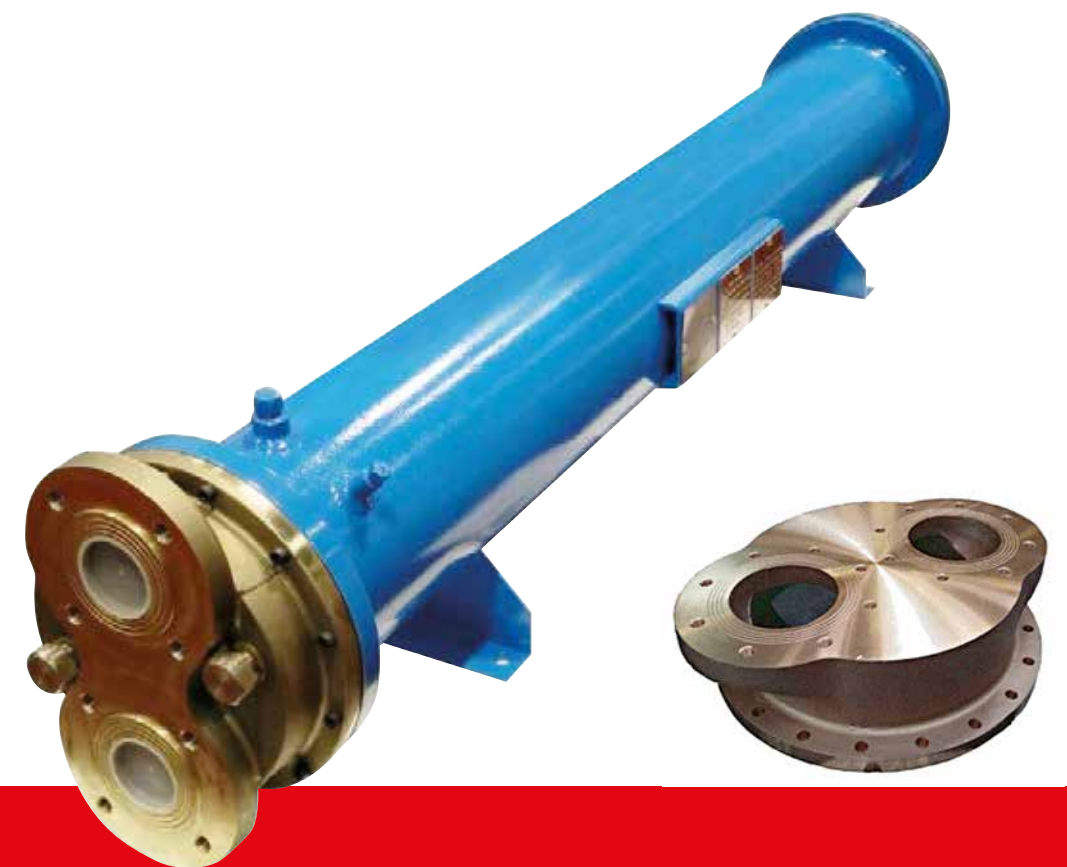


ONDA can provide the tubes passivation to prevent corrosion during the heat exchanger commissioning

SOFTWARE AVAILABLE FROM WEB SITE



PFHE - S&T - BPHE



ADVANCED HEAT EXCHANGERS

- ONDA S.p.A.**
onda@onda-it.com
www.onda-it.com
- PLANT 1 Headquarters**
 Via Dante Alighieri, 27B
 36065 Mussolente (VI)
 Italy
 t. +39 0424 87633
- PLANT 2**
 Via L. Baden Powell, 11
 36045 Lonigo (VI)
 Italy
 t. +39 0444 720720
- PLANT 3**
 Via Vittoria, 158A
 36065 Mussolente (VI)
 Italy
 t. +39 0424 87506
- PLANT 4**
Onda USA L.L.C.
 600 London Rd
 Delaware, OH 43015
 t. +1 614 321 3342

- Onda France S.A.R.L.**
 320, Avenue Berthelot
 69008 Lyon France
 t. +33 472784606
 m. +33 608341000
www.onda-fr.com
onda@onda-fr.com
- Onda USA L.L.C.**
 600 London Rd
 Delaware, OH 43015
 t. +1 614 321 3342
www.onda-us.com
onda@onda-us.com
- Onda RU**
 Mayakovskogo Street, 18a,
 Khimki,
 Moscow Region,
 Russia 141400
 t. +7 495 971 88 53
 m. +7 916 676 16 54
www.onda-it.com
info@onda-ru.com
- Onda Shanghai**
 Heat Exchanger Co., Ltd.
 颐惠喏 (上海) 热交换有限公司
 Shanghai, Changning District,
 Anhua Road 492,
 Building 1 Tower A, Room 126
 上海市长宁区安化路492号1幢
 (A座) 126室A092
 t. +86 021 6056 4838 (ext.1000)
 m. +33 6 08 34 10 00

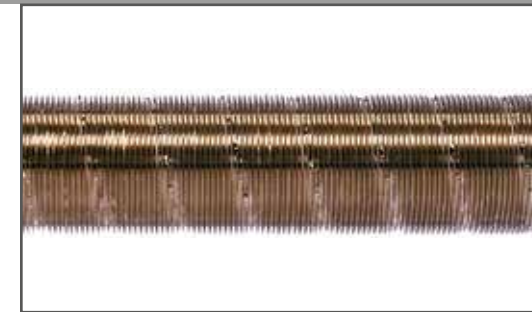
SHELL & TUBE MARINE CONDENSER

EXCHANGE TUBE

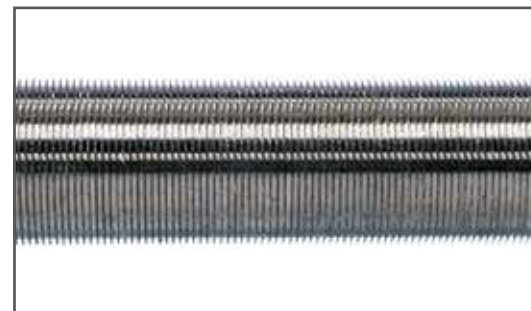
MARINE HEADS



High performance CuNi 90/10



Standard performance CuNi 90/10



Standard performance CuNi 70/30



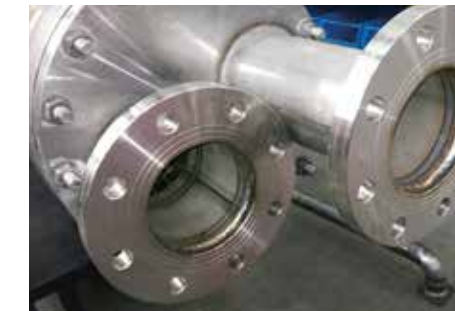
Standard performance Titanium



Water box epoxy coating



Water box CuNi 90/10



AISI 316



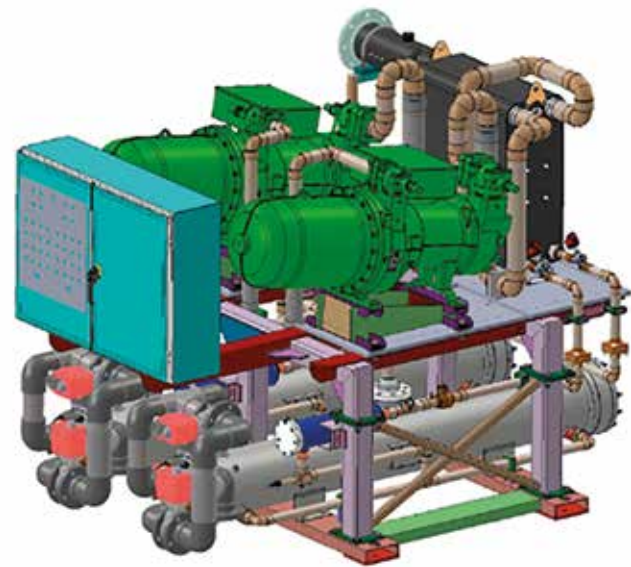
Bronze marine



Anode

TUBE SHEETS

PAINTING - QUALIFICATIONS



ONDA MARINE CAPABILITIES

Onda has developed over the time a good know-how on marine shell and tube applications with a large number of heat exchangers installed in cruise ships, marine navy, luxury yachts, cargo, fishing boats.

The shell and tube marine condenser line can be configured with many different material options thanks to Onda's manufacturing capability



Epoxy coating



CuNi 70/30 cladded



Titanium cladded



CuNi 90/10 cladded



MARINE - QUALIFICATIONS



Onda can produce HEX according to all major marine Pressure Vessel codes



Paintings are based on epoxy type suitable for marine applications, tested according (salt spray resistance from 500 to 700 hours), to NF EN ISO 9227, the color can be customized.